

LADDERTECH

Expert in Safety Ladder

CATALOGUE FOR PLATFORM LADDERS

EDITION 2024



WHO IS LADDERTECH?

Ladder Technology Industrial Sdn Bhd (LADDERTECH) with its brand, Step by Step has been an OEM industrial ladder manufacturer since the year of 2010.

Carrying a slogan 'Expert in Safety Ladder', LADDERTECH specializes in customized industrial platform ladder that fits your specific industrial requirements.

We offer a LOW minimum order quantity!





YOUR ONE STOP LADDER SOLUTION!

Why we should work together?

1



Made in MALAYSIA

All materials from Malaysia and direct from manufacturer.
Certificate of Origin is not an issue.

2



Customization Options

We design based on your specific height, width and designs.

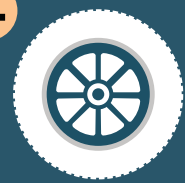
3



Non-Disclosure Agreements

Our partnership will be protected and secured.

4

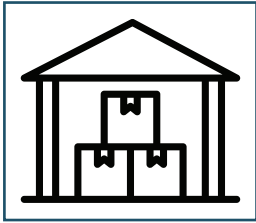


Spare Parts and Accessories

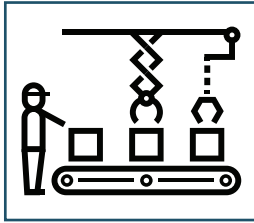
Replacements can be done with a LOW MOQ

HOW TO SELECT THE RIGHT LADDER FOR YOUR JOB?

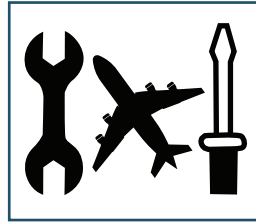
STEP 1 : SELECT LADDER BASED ON YOUR USAGE



Warehouse and
Factory



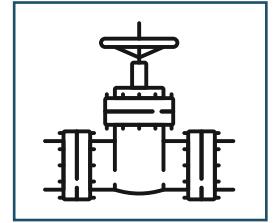
Production



Aviation and Aircraft MRO

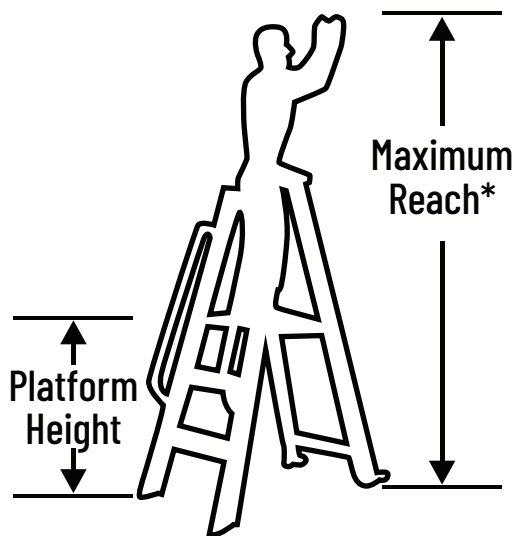


Construction



Pipeline

STEP 2 : SELECT YOUR WORKING HEIGHT



*Assumes a 5'6" person with a vertical 12' reach.

PLATFORM LADDERS	
PLATFORM HEIGHT	MAXIMUM REACH*
3'	9'
4'	10'
5'	11'
6'	12'
7'	13'
8'	14'
9'	15'
10'	16'
11'	17'
12'	18'
13'	19'
14'	20'
15'	21'
16'	22'
17'	23'
18'	24'
19'	25'
20'	26'

STEP 3 : SELECT YOUR WORKING LOAD

STEP BY STEP PERFORMANCE SYSTEM
COLOUR MATCH FOR LADDER PERFORMANCE



150 KG
HEAVY DUTY SERIES

Handle rugged projects



180 KG
EXTRA HEAVY DUTY SERIES

Extreme & intense projects

STEP 4 : SELECT YOUR MATERIALS



TABLE OF CONTENT

• PLATFORM LADDER

HEAVY DUTY SERIES

★★
150 KG
HEAVY DUTY SERIES

- PLATFORM TROLLEY LADDER (PTL) PG 6-8
- SAFETY LADDER TROLLEY (SLT-AL) PG 9-10
- CUSTOMIZED CANTILEVER PLATFORM LADDER (CCPL) PG 11-12
- COLLAPSIBLE PLATFORM TROLLEY LADDER (CPTL) PG 13-14
- SQUARE PLATFORM LADDER (SPL) PG 15

EXTRA HEAVY DUTY SERIES

★★★
180 KG
EXTRA HEAVY DUTY SERIES

- AIRCRAFT MAINTENANCE PLATFORM LADDER (AMPL) PG 16-17

• ROOF ACCESS LADDER

HEAVY DUTY SERIES

★★
150 KG
HEAVY DUTY SERIES

- CROSS BRIDGE LADDER (CBL) PG 18-19
- STEPOVER PLATFORM LADDER (SOPL) PG 20-22

• ADDITIONAL INFORMATION

- WHAT LADDER FOR WHAT JOB PG 23-24
- LADDER DO'S AND DON'TS PG 25
- LADDER USAGE GUIDE PG 26-27
- HOW TO WORK WITH US PG 28



PLATFORM LADDER



150 KG
HEAVY DUTY SERIES

Handle rugged projects

PLATFORM TROLLEY LADDER (PTL)



Foldable and Movable

*This is designed for warehouse,
factory and racking industries*



COMPLIED TO BS EN 131

LADDERTECH

Expert in Safety Ladder



www.ladder-tech.com.my



marketing@ladder-tech.com.my



+6019 924 8895 / +6016 208 3915

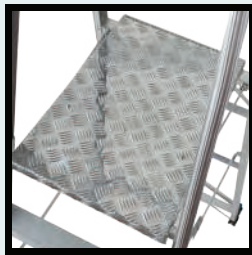
PLATFORM LADDER



Handrail to support user in climbing.



Safety guardrail.



Wider checker plate platform.



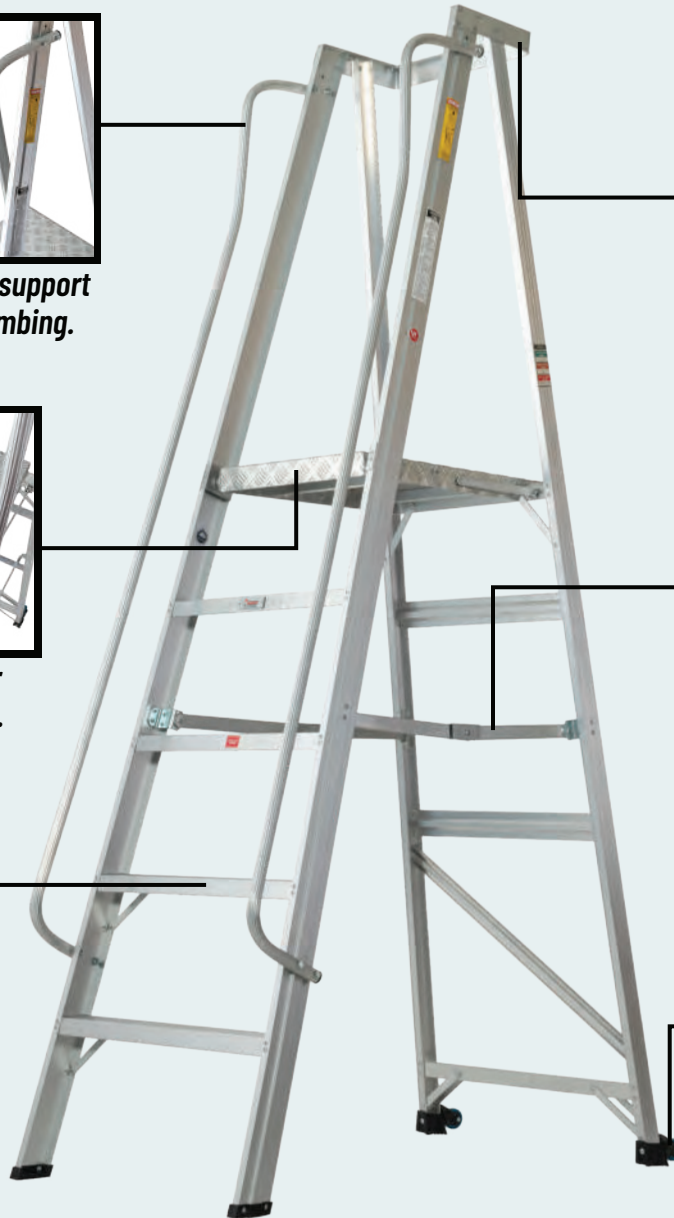
Solid internal spreader.



Anti-slip steps features.



Big and non-marking castor wheel.



PRODUCT CODE: PTL

CODE	NO OF STEP	PLATFORM HEIGHT (MM)	LADDER HEIGHT (MM)	WEIGHT (KG)	PACKAGING DIMENSION (L x W x H) MM
PTL03	3	915	1916	12.29	2065 x 670 x 270
PTL04	4	1211	2213	13.68	2370 x 700 x 270
PTL05	5	1515	2517	15.37	2675 x 730 x 270
PTL06	6	1813	2817	16.93	2980 x 760 x 270
PTL07	7	2115	3117	18.42	3280 x 795 x 270
PTL08	8	2412	3408	20.37	3585 x 830 x 270
PTL09	9	2713	3707	22.63	3890 x 860 x 270
PTL10	10	3000	3994	24.02	4195 x 890 x 270
PTL11	11	3298	4298	25.76	4500 x 925 x 270
PTL12	12	3608	4602	27.74	4810 x 960 x 270

WORKING LOAD : 150KG

**Need a specific height, width, or finishing?
We are able to do customization.**

PLATFORM LADDER

ADDITIONAL ACCESSORIES

1



Single

Dual

Optional Type of Safety Gate
Gate that securely wraps around safe work zone.

2



Tool Box

For user to place and organize their working tools.

3



Toeboard

To ensure user working equipment stay in place and does not fall off.

4



Bottom Support

To enhance ladder solidity.

5



Spring Loaded Castor Wheels (4pcs/ Set)

Designed to absorb shocks which result in smoother movement.

6



Leg Stabilizer

For added stability and to hold ladder in position while at work.

7



Netting

Net that securely wraps around platform area.

8



Ladder Hanger

Less space consuming for ladder storage.



Ladder hanger usage as reference



****Powder Coated finishing is also available
(Upon request and available colour)**

PLATFORM LADDER



150 KG
HEAVY DUTY SERIES

Handle rugged projects

SAFETY LADDER TROLLEY (SLT-AL)

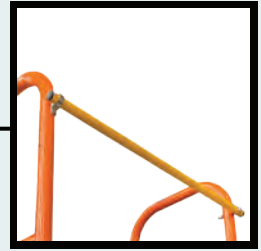


*Remark:
Ladder design subject to customer requirement.*

PLATFORM LADDER



Strong and solid orange coloured handrail.



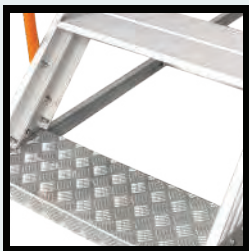
Yellow safety gate.



Wide checker plate platform for comfortable working area.



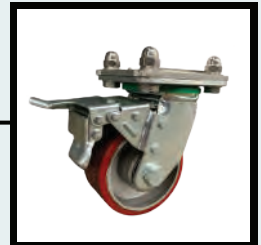
Secured toe box features.



Anti-slip step and checker plate step features.



Heavy duty body.



Durable castor wheels.
Front: Swivel type with brake system.
Back: Rigid type.

PRODUCT CODE	SLT-AL
AVAILABLE STEPS	4 - 10 STEPS
LADDER DEGREE	60°
PLATFORM SIZE (MM)	760 x 500
STEP WIDTH (MM)	210
STEP INTERVAL (MM)	305

Need a specific height, width, or finishing?
We are able to do customization.

PLATFORM LADDER



150 KG

HEAVY DUTY SERIES

Handle rugged projects

CUSTOMIZED CANTILEVER PLATFORM LADDER (CCPL)



Remark:

Ladder design subject to customer requirement.

LADDERTech

Expert in Safety Ladder



www.ladder-tech.com.my

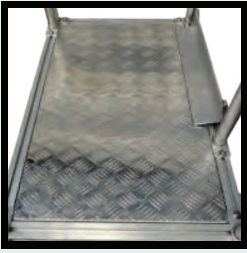


marketing@ladder-tech.com.my



+6019 924 8895 / +6016 208 3915

PLATFORM LADDER



Checker plate platform.



Foldable extended bar.



Solid back support.



Safety handrail clamp.



*Swivel castor wheel
with stopper.*



Checker plate base.

PRODUCT CODE	CCPL
AVAILABLE STEP	3 - 12 STEPS
PLATFORM SIZE (MM)	950 x 650
STEP WIDTH (MM)	210
STEP INTERVAL (MM)	270
CASTOR WHEEL SIZE	5"
CASTOR TYPE	CASTOR WHEEL (RIGID)
LADDER DEGREE	60°

**Need a specific height, width, or finishing?
We are able to do customization.**

PLATFORM LADDER



150 KG
HEAVY DUTY SERIES

Handle rugged projects

COLLAPSIBLE PLATFORM TROLLEY LADDER (CPTL)



*Remark:
Ladder design subject to customer requirement.*

PLATFORM LADDER



Yellow safety gate.



Strong and solid handrail.



Heavy duty body.



Wide checker plate platform for comfortable working area.



Anti-slip step features.



Durable castor wheels.

PRODUCT CODE	CPTL
AVAILABLE STEP	4 - 10 STEPS
STEP WIDTH (MM)	80
STEP INTERVAL (MM)	305
LADDER DEGREE	60°

**Need a specific height, width, or finishing?
We are able to do customization.**

PLATFORM LADDER



SQUARE PLATFORM LADDER (SPL)



150 KG
HEAVY DUTY SERIES

Handle rugged projects



1. STEP STOOL



2. WITHOUT HANDRAIL



3. WITH HANDRAIL (DUAL)



3. WITH HANDRAIL (SIDE)

Need a specific height, width, or finishing?
We are able to do customization.



PLATFORM LADDER



180 KG

EXTRA HEAVY DUTY SERIES

Extreme & intense projects

AIRCRAFT MAINTENANCE PLATFORM LADDER (AMPL)



Remark:

Ladder design subject to customer requirement.

LADDERTECH

Expert in Safety Ladder



www.ladder-tech.com.my



marketing@ladder-tech.com.my

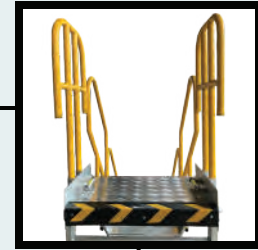


+6019 924 8895 / +6016 208 3915

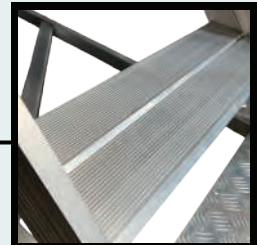
PLATFORM LADDER



Handle pull to unlock.



Platform handrail.



Anti-slip step features.



Towing handle with lock.



Checker plate step features.



Swivel castor wheel with stopper.



Floor leveller.

PRODUCT CODE	AMPL
AVAILABLE STEP	3 - 12 STEPS
PLATFORM SIZE (MM)	900 x 745
STEP WIDTH (MM)	200
STEP INTERVAL (MM)	250
CASTOR WHEEL SIZE	4"
CASTOR TYPE	POLYURETHANE CASTOR WHEEL
LADDER DEGREE	45°

**Need a specific height, width, or finishing?
We are able to do customization.**

ROOF ACCESS LADDER



150 KG
HEAVY DUTY SERIES

Handle rugged projects

CROSS BRIDGE LADDER (CBL)

*Remark:
Ladder design subject to customer requirement.*



CROSS BRIDGE LADDER (5 STEPS)



PRODUCT CODE	CBL (5 STEPS)
PLATFORM SIZE (MM)	1500 x 800
STEP WIDTH (MM)	200
STEP INTERVAL (MM)	305
PLATFORM HEIGHT (MM)	1300
TOTAL HEIGHT (MM)	2215
LADDER DEGREE	60°
WORKING LOAD	150kg

CROSS BRIDGE LADDER (11 STEPS)



PRODUCT CODE	CBL (11 STEPS)
PLATFORM SIZE (MM)	1800 x 800
STEP WIDTH (MM)	200
STEP INTERVAL (MM)	305
PLATFORM HEIGHT (MM)	3150
TOTAL HEIGHT (MM)	4065
LADDER DEGREE	60°
WORKING LOAD	150kg

Need a specific height, width, or finishing?
We are able to do customization.

ROOF ACCESS LADDER



STEPOVER PLATFORM LADDER (SOPL)



150 KG
HEAVY DUTY SERIES

Handle rugged projects



6 + 3 STEPS



4 + 4 STEPS



5 + 4 STEPS



4 + 2 STEPS

Need a specific height, width, or finishing?
We are able to do customization.

ROOF ACCESS LADDER



STEPOVER PLATFORM LADDER (SOPL)



150 KG
HEAVY DUTY SERIES

Handle rugged projects



11 + 4 STEPS WITH HANDRAIL



8 + 2 STEPS WITH HANDRAIL



4 STEPS



5 + 2 STEPS

Need a specific height, width, or finishing?
We are able to do customization.

ROOF ACCESS LADDER



STEPOVER PLATFORM LADDER (SOPL)



150 KG
HEAVY DUTY SERIES

Handle rugged projects



6 + 4 STEPS



9 + 11 STEPS WITH HANDRAIL



10 + 2 STEPS WITH HANDRAIL

Need a specific height, width, or finishing?
We are able to do customization.

WHAT LADDER FOR WHAT JOB

ALUMINIUM

STEP BY STEP PLATFORM LADDERS



RECOMMENDATION ON THE TYPE OF INDUSTRIES

FACTORY AND MANUFACTURING

Factory Usage						
Warehousing						
Racking						

OTHERS

Logistic						
Office						
Retail Shop						
Event Space						
Roof Top						
Aviation						
Construction						
Pipelines						
Conveyor Line						

WHAT LADDER FOR WHAT JOB

ALUMINIUM

STEP BY STEP ROOF ACCESS LADDERS



CBL



SOPL

RECOMMENDATION ON THE TYPE OF INDUSTRIES

FACTORY AND MANUFACTURING

Factory Usage		
Warehousing		
Racking		

OTHERS

Logistic		
Office		
Retail Shop		
Event Space		
Roof Top		
Aviation		
Construction		
Pipelines		
Conveyor Line		

LADDER DO'S AND DON'TS



LADDER SAFETY

There are several reasons why people are injured or killed each year as a result of accidents related to ladder usage. Some of the main causes include sliding of the ladder base or the ladder itself tipping sideways.

Many people also sustain back injuries as a result of improperly carrying and setting up ladders. The key factors for ladder safety is knowing the basic of Do's and Don'ts of a ladder usage.

DO'S

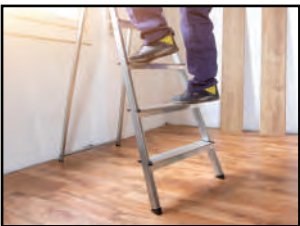
ONLY USE A LADDER:



After you have inspected it



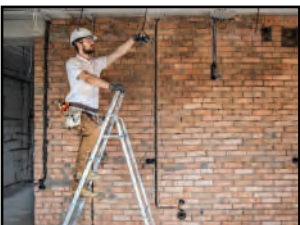
Always climb facing the ladder



At a firm and even level floor



Stay near the middle of the ladder



Where you can maintain 3 points of contact (hands or feet)



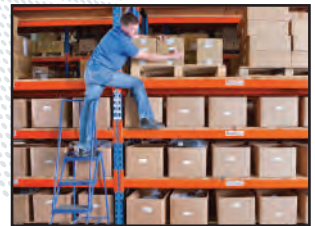
When there are two persons can carry the long ladder

DON'TS

ON A LADDER DO NOT:



Climb on the handrail and the top step



Overreach



Climb a closed ladder



Wear slippery and unprotected footwear



Use ladder as a "cross over bridge"



Use a ladder without a firm support

LADDER USAGE GUIDE

BEFORE

Employees should conduct inspections for general ladder safety for all portable ladder types by checking the followings: Ladders should not have any damage, lack of structural integrity, missing components or loose parts.

Warning: Damaged or worn ladders should never be used.



- ❶ Inspect and read the safety labels.
- ❷ The steps or rungs must be tight and secure to the side rails (ladder body).
- ❸ All fittings need to be properly and securely attached.
- ❹ The ladder feet must have the slip resistant material (rubber shoes or footer with rubber pad).
- ❺ The ladder base shall be placed on a secure and even footing.
- ❻ Ladders shall be free of oil, grease, or slippery materials.

DURING

Once you have done your inspection, there are simple precautions that can minimize the risk of a fall.



- ❶ Position Ladders Correctly: Keep the area around the top and bottom of a ladder clear. Use on a firm and even level floor.
- ❷ Wear shoes with slip resistant base.
- ❸ Maintain a 3-point contact (two hands and a foot, or two feet and a hand)
- ❹ Get help when needed. DO NOT try to do alone if you can't do it safely by yourself.
- ❺ Secure Ladders Properly: Make sure the ladder is fully spread, the hook is securely locked on the rung and the locking hinge is locked to hold the ladder in position.
- ❻ Clean mud and other slippery substances off your shoes and ladder rungs before climbing the ladder.

LADDER USAGE GUIDE

AFTER

It is vital for every user to take note of simple instructions after ladder usage.



- ❶ Keep all ladders and ladder accessories maintained in good condition at all times.
- ❷ Store all ladders in a secure place upon usage.
- ❸ Withdraw damaged ladders immediately from service for repair or destruction.
- ❹ Never store ladders unmanaged and in stacking position.
- ❺ Keep the ladders free of oil, grease, or slippery materials all the time by cleaning frequently.



HOW TO WORK WITH US?

Step 1

Design Drawing

Send in your design drawing through email or Whatsapp.



Step 4

Production & QC

After prototype is approved, production and quality control will take 3-4 weeks to complete.



Step 2

Existing Profile/New Profile

We will check for the availability of an existing profile or open a new mould.



Step 5

Shipment

Your ladders are now fully prepared and ready to be shipped out to you!



Step 3

Prototype

LADDERTECH to fabricate prototype for customer approval.





**Always remember that
SAFETY is #1 priority
in doing your job**

LADDERTECH

Expert in Safety Ladder

Ladder Technology Industrial Sdn Bhd
(201201026929)

📍 No. 26, Jalan Tiara 4, Bandar Baru Klang, 41150 Klang, Selangor

☎ +603-3343 8895/ +603-3348 8895

📠 +603 3362 6895

🌐 www.ladder-tech.com.my

✉ marketing@ladder-tech.com.my

FOR MORE INFORMATION

SCAN OUR QR CODE NOW!



Facebook



Website



Whatsapp

Distributed by: